



IBM Software Group

2005 B2B Customer Conference

Pioneering New Horizons – Solutions that Evolve

WebSphere Partner Gateway with EDI

Rayne Anderson

WebSphere. software |



ON DEMAND BUSINESS

© IBM Corporation



Objectives

- To provide a basic understanding of the EDI Capabilities and configuration within WebSphere Partner Gateway (WPG).
- Managing EDI transactions using reporting capabilities
- Configure for receiving Record Oriented or XML documents for transformation into EDI Transactions.
- Configure for transforming EDI Transactions into Record Oriented or XML documents.
- Configure for Functional Acknowledgments.
- Advanced EDI Interchange configuration for selecting different business packaging or maps by using Connection Profiles.
- Use of the Envelope Profiles and what determines which EDI Transactions are put into an EDI Interchange.
- Batching options for EDI Transactions.
- VAN connectivity configuration.





Agenda

- **Discuss basic EDI flow configuration**
- Document viewing and reporting capability
- Advanced EDI configuration





WPG EDI Overview

- Interchanges and Transactions are treated as business documents.
- There are some special recognition of EDI documents and new EDI components for handling the EDI requirements.
- There are several basic flows required for the different EDI documents.





WPG EDI Overview – document flows

For EDI documents going to a partner:

- EDI Interchanges require a Participant Connection to a partner. This is for the EDI Interchange that has been created for the Transactions being sent to the partner.
- For each EDI Transaction type (i.e. 850) that is going to a partner a connection will be required for any specific configuration and transformation maps (i.e. XML to EDI 850). Special built in product handling will send these to an Enveloper component for aggregating into an EDI Interchange envelope.
- Functional Acknowledgment transactions:
 - Can be configured to be created for the Transactions received from a partner. These will be created by the Source EDI Validation step in an Action and require their own connection.
 - Can be configured for Overdue status for an Interchange sent to a partner.
 - Reconciliation status will be maintained.

For EDI documents coming from a partner.

- EDI Interchanges require a Participant Connection for de-enveloping the Interchange into the individual EDI Transactions.
- Each EDI Transaction from the EDI Interchange de-enveloping will be processed through its own Participant Connection. Typically there will be an EDI Source Validation and Transformation steps.
- Functional Acknowledgments will be consumed by WPG and do not require a Participant Connection.
 - Reconciliation status will be maintained.





WPG brief configuration overview

- Document Flow Definition – defines the supported packages, protocols, and document types along with global attribute configuration.
- B2B Capabilities – defines what documents a partner can send or receive and configuration for those documents.
- Interaction – defines how a source document gets processed by WPG into a target document.
- Participant Connection – Associates a source and target partner with an Interaction.





WPG brief configuration overview (cont.)

Example B2B EDI Capabilities:

- EDI-X12 → ISA - is the EDI Interchange
- X12V2R1 → 850 – is the EDI Transaction

Profile » partnera » B2B Capabilities

Set Source	Set Target	Enabled	Edit	Document Flow Definition					
				0	1	2	3	4	All
				Package: AS					
				Package: None					
				Package: Backend Integration (1.0)					
		Enabled		Package: N/A					
		Enabled		Protocol: EDI-X12 (ALL)					
				Document Flow: ISA (ALL)					
				Protocol: &DT99737 (ALL)					
				Protocol: &WDIEVAL (ALL)					
		Enabled		Protocol: X12V2R1 (ALL)					
		Enabled		Document Flow: 850 (ALL)					
				Protocol: EDI-Consent (ALL)					
				Protocol: EDI-EDIFACT (ALL)					



To partner – EDI Interchange

- Define a Participant Connection from the CM to the TP.
 - This is a one time set up for this partner.
- Interaction
 - Action will be Pass Through.
 - No transformation map.
 - From packaging will be N/A
 - To packaging will depend on how the Interchange will be sent out, such as None or AS2.
 - From and To Protocol will be EDI-X12.
 - From and To Document Flow will be ISA.





To partner – EDI FA Transactions

- Define a Participant Connection for the FA from CM to TP. This is only required if you will be responding back to a Partners received EDI Interchange with an acknowledgment.
 - This is a one time set up for this partner.
- Interaction
 - Action will be Pass Through.
 - No transformation Map.
 - Document From and To packaging will be N/A.
 - Document From and To protocol will be the same. Note: The protocol will be for the FA Map used for generating the acknowledgment.
 - Document From and To will be 997.
- Document Flow
 - On the Partner configure the Envelope Profile to use.



To partner – EDI Transactions

- Define a Participant Connection for each Transaction type from CM to TP.
- Interaction
 - Action will have the Transformation step.
 - Map will be for the required transformation, such as from XML to EDI 850. Note: the map was previously imported from the DIS Client.
 - From Document Packaging, Protocol and Document Flow depends on how the source was received.
 - To Document Packaging will be N/A, Protocol the will match the Metadictionary value as imported from the DIS Client, Document Flow will the Transaction Type.
- Document Flow
 - Define in the Community Manager (Source)
 - The Source EDI Transaction the qualifier (i.e. 01) and identifier (i.e. 111111111). **Tip:** Define at the protocol level (corresponds to DIS Client Metadictionary) so that you do not need to define on each Transaction type.
 - Define in the Partner (Target)
 - The EDI Transaction the qualifier (i.e. 01) and identifier (i.e. 222222222). **Tip:** Define at the protocol level (corresponds to DIS Client Metadictionary) so that you do not need to define on each Transaction type.
 - The Envelope Profile (defined at the Protocol level.
 - FA Overdue – Optionally define “FA required time limit”
 - The EDI Validation Map to use (imported from the DIS Client) for target EDI Validation.





From partner – EDI Interchange

- Define a Participant Connection from the TP to the CM.
 - This is a one time set up for this partner.
- Interaction
 - Action will be De-envelope.
 - No map.
 - From packaging will depend on how the Interchange is received, such as None or AS2.
 - To packaging will be N/A.
 - From and To Protocol will be EDI-X12
 - From and To Document Flow will be ISA
- Partner Profiles
 - For CM define business id as combination of qualifier and business id (i.e. 01-111111111)
 - For TP define business id as combination of qualifier and business id (i.e. 01-222222222)





From partner – EDI Transactions

- Define a Participant Connection for each Transaction type from T P to CM.
- Interaction
 - Action will have the EDI Source Validation and Transformation step.
 - Map will be for the required Transformation, such as from EDI 850 to XML. Note: the map was previously imported from the DIS Client.
 - From Document Packaging will be N/A, Protocol the will match the Metadictionary value as imported from the DIS Client, Document Flow will be the Transaction Type.
 - To Document Packaging, Protocol and Document Flow depends on how the target will be received.
- Document Flow
 - Define in the Partner
 - The FA Map to use for returning FAs (defined at the Protocol)
 - The EDI Validation Map to use (imported from the DIS Client) for source EDI Validation.





Agenda

- Discuss basic EDI flow configuration
- **Document viewing and reporting capability**
- Advanced EDI configuration



Document viewing and reporting - overview

- General document viewing
 - Can drill down from parent (i.e. EDI Interchange) to child (i.e. EDI Transaction)
 - Can drill up from child (i.e. EDI Transaction) to parent (i.e. EDI Interchange)
 - Can view related Functional Acknowledgments.
- Reporting
 - Show Functional Acknowledgements that are overdue.
 - Show EDI Transactions that received FAs indicate have failed.





Document viewing – drill down

Showing EDI Interchange

Original File Name:
 Reference Id: 11261296820840002554F2F140422768458F16F7E9BED40
 Document ID: 000000016

Doc Time Stamp	Gateway Type	Connection Document Flow	Status
050907-2148	Production		

Source	In Time Stamp	Source Business ID	Source Document Flow
mgr 0.521 kb	9/7/05 9:48:02 PM	01-011011011	EDI-X12 ALL: ISA ISA ALL
Target	End State Time Stamp	Target Business ID	Target Document Flow
srv75 0.692 kb	9/7/05 9:48:03 PM	01-075075075	EDI-X12 ALL: ISA ISA ALL

Document Parent

None
 Source
 Target

No Parents Available

Document Children

None
 Source
 Target

No Children Available

Document Events





Document viewing – drill down (cont.)

Showing EDI Interchange – Children expanded

Gateway Type	Connection	Document Flow	Stat	Doc Time Stamp
Production				050907-2148

Source	In Time Stamp	Source Business ID	Source Document Flow	
mgr	9/7/05 9:48:02 PM	01-011011011	EDI-X12 ALL: ISA ISA ALL	0.521 kb

Target	End State Time Stamp	Target Business ID	Target Document Flow	
srv75	9/7/05 9:48:03 PM	01-075075075	EDI-X12 ALL: ISA ISA ALL	0.692 kb

Document Parents

Source Target

No Parents Available

None

Document Children

Source Target

None

Page 1 of 1

Back 10 Pages | Back 1 Page | 1 | Forward 1 Page | Forward 10 Pages | Beginning

Document Tree

Participants	Time Stamps	Document Flow	Gateway Type	Synchronous	Status
Document ID: -					
Document Time Stamp: -					
Source: mgr	9/7/05 9:47:33 PM	(4.512 kb)	ICGCPU: ICGCPU (ALL)		
Target: srv75	Out: null	(0.321 kb)	X12V3R1 (ALL) 850: 850 (ALL)		Production



Document viewing – drill down (cont.)

Showing EDI Interchange – showing one of the children, note the associated FA

Document Details
Welcome, Hub Administrator

[List](#) [Help](#)

Original File Name:
Reference Id: 11261296733530002554F2F14014562F33407AE10AC5374
Document ID: -

Doc Time Stamp	Gateway Type	Connection Document Flow	Status
-	Production		

	Source	In Time Stamp	Source Business ID	Source Document Flow
4.406 kb	mgr	9/7/05 9:47:53 PM	011011011	FVT-XML-TEST ALL: ICGCPO ICGCPO ALL

	Target	End State Time Stamp	Target Business ID	Target Document Flow
0.313 kb	srv75		075075075	X12V3R1 ALL: 850 850 ALL

Associated Documents

[Help](#)

	Participants	Time Stamps	Document Flow	Status
	Source: srv75	In: 9/7/05 9:48:14 PM	X12V3R5 (ALL) 997: 997 (ALL)	
	Target: mgr	Out: 9/7/05 9:48:20 PM	X12V3R5 (ALL) 997: 997 (ALL)	

Document Parent



Document viewing – drill down (cont.)

Showing EDI Interchange – showing the FA, note the associated Trans.

DOCUMENT DETAILS welcome, HUB Administrator

[List](#)

Original File Name:
Reference Id: 11261296998840002554F2F14042276E0C03C760023D837
Document ID: 000000008

Doc Time Stamp	Gateway Type	Connection	Document Flow	Status
050907-2156	Production			

Source	In Time Stamp	Source Business ID	Source Document Flow
0.065 kb srv75	9/7/05 9:48:14 PM	01-075075075	X12V3R5 ALL: 997 997 ALL

Target	End State Time Stamp	Target Business ID	Target Document Flow
mgr	9/7/05 9:48:20 PM	01-011011011	X12V3R5 ALL: 997 997 ALL

Associated Documents

Participants	Time Stamps	Document Flow	Status
Source: mgr Target: srv75	In: 9/7/05 9:47:53 PM Out:	FVT-XML-TEST (ALL) ICGCPO: ICGCPO (ALL) X12V3R1 (ALL) 850: 850 (ALL)	

Document Parent



Document viewing – drill up

Drilled up from Transaction to Interchange by selecting document parent

Original File Name:
Reference Id: 11261296733530002554F2F14014562F33407AE10AC5374
Document ID: -

Doc Time Stamp	Gateway Type	Connection	Document Flow	Status
-	Production			

Source	In Time Stamp	Source Business ID	Source Document Flow
mgr 4.406 kb	9/7/05 9:47:53 PM	011011011	FVT-XML-TEST ALL: ICGCPO ICGCPO ALL

Target	End State Time Stamp	Target Business ID	Target Document Flow
srv75 0.313 kb		075075075	X12V3R1 ALL: 850 850 ALL

Associated Documents

Participants	Time Stamps	Document Flow	Status
Source: srv75	In: 9/7/05 9:48:14 PM	X12V3R5 (ALL) 997: 997 (ALL)	
Target: mgr	Out: 9/7/05 9:48:20 PM	X12V3R5 (ALL) 997: 997 (ALL)	

Document Parent

None
 Source
 Target

Document Tree

Participants	Time Stamps	Document Flow	Gateway Type	Synchronous	Status
Document ID: 000000016					
Doc Time Stamp: 050907-2148					
Source: mgr	In: 9/7/05 9:48:02 PM	(0.534 kb)	EDI-X12 (ALL) ISA: ISA (ALL)		
Target: srv75	Out: 9/7/05 9:48:03 PM	(0.709 kb)	EDI-X12 (ALL) ISA: ISA (ALL)	Production	





Reporting – Overdue Functional Acknowledgments

EDI FA Overdue Report

Welcome, Hub Administrator

• Show Criteria • Export Results

Page 1 of 1

Total Rows: 2

Beginning	Back 10 Pages	Back 1 Page	1	Forward 1 Page	Forward 10 Pages	End
-----------	---------------	-------------	---	----------------	------------------	-----

Ignore Selected Records

Participants	Document Flow	Control Numbers	Expected Time	Overdue Time (d:h:m)
Reference ID : 11262791557240002554F2F140493240E80BB4FD15A2A49				
Doc Time Stamp : 9/9/05 3:19:21 PM				
<input type="checkbox"/>	Source: mgr None:N/A FVT-XML-TEST:ALL ICGCPO:ALL	3	9/9/05 3:20:21 PM	0:00:16
	Target: srv75 N/A:N/A X12V3R1:ALL 850:ALL	3		
Reference ID : 11262794897830002554F2F140493240B768FAFEB5E9796				
Doc Time Stamp : 9/9/05 3:24:57 PM				
<input type="checkbox"/>	Source: mgr None:N/A FVT-XML-TEST:ALL ICGCPO:ALL	5	9/9/05 3:25:57 PM	0:00:11
	Target: srv75 N/A:N/A EDI97B:ALL ORDERS:ALL	5		



Reporting – Failed Transactions

Showing Transactions that failed per the returned FA.
 Clicking document details will take you to the Document viewer.

EDI Rejected Transaction Report Welcome, Hub Administrator

[Show Criteria](#) [Export Report](#)

Page 1 of 1 Total Rows

Beginning	Back 10 Pages	Back 1 Page	1	Forward 1 Page	Forward 10 Pages	End
-----------	---------------	-------------	----------	----------------	------------------	-----

Participants	Document Flow	Control Numbers	Status Code	Status Text
Reference ID : 11261296998840002554F2F14042276E0C03C760023D837				
Doc Time Stamp : 9/7/05 9:48:19 PM				
 Source: mgr	None:N/A FVT-XML-TEST:ALL ICGCPO:ALL N/A:N/A	16 16 16	R	5
Target: srv75	X12V3R1:ALL 850:ALL			



Agenda

- Discuss basic EDI flow configuration
- Document viewing and reporting capability
- **Advanced EDI configuration**



Advanced EDI configuration - overview

- Connection Profile
- EDI Control number initialization
- Envelope Profile
- EDI Document Flow attributes
- Receiver Splitter Handlers
- FTP Scripting transport
- Enveloper
- DIS Client
- EDI Maps – Validation, Transformation, FA's.
- EDI Actions



EDI Configuration – Connection Profiles

- Participant Connections are determined based on To / From Business Ids and Source document type.
- Connection Profiles are used when additional criteria is required to differentiate similar connections.
- Two major uses:
 - An EDI Interchange to a partner can use different Packages and / or Gateways depending on the Transaction types within the Interchange.
 - An EDI Transaction from a Partner can use different processing criteria, such as transformation map or target Gateway, depending on the Group information.





EDI Configuration – Connection Profiles (cont.)

EDI Interchanges to a partner

- Create a Connection Profile and set the Qualifier1 attribute with a unique value
- Create a Participant Connection for the Interchange and associate the Connection Profile
- For each Transaction types that are to be put into that Interchange set the Document Attribute value for *Connection Profile Qualifier 1* with the same value as in the Connection Profile





EDI Configuration – Connection Profiles (cont.)

Connection Profile Details



Connection Profile Name : CP_AS2
Description :
Qualifier1 : Use_AS2
EDI Usage Type :
Application Sender ID :
Application Receiver ID :
Password :

✓
Package: N/A (N/A)
Protocol: EDI-X12 (ALL)
Document Flow: ISA (ALL)
Attributes
Actions
Gateways
Attributes
Package: None (N/A)
Protocol: EDI-X12 (ALL)
Document Flow: ISA (ALL)

Add Connection Profile
Active Profiles :
Base Connection
Base Connection
CP_AS2

Connection Profile Qualifier1	Connection Profile Qualifier1	Use_AS2	Locally Assigned
			Use_AS2



EDI Configuration – Connection Profiles (cont.)

EDI Transactions

- Define Connection Profile with the applicable group information
- Define a Participant Connection using that Connection Profile
- During runtime the group information for the de-enveloped Transaction will be used to help determine the connection to use





EDI Configuration – Connection Profiles (cont.)

Connection Profile Details



Connection Profile Name : CP_Purchasing
Description :
Qualifier1 :
EDI Usage Type :
Application Sender ID : Purchasing
Application Receiver ID :
Password : ABC






EDI Configuration – EDI Control Numbers

- **Control Number Initialization**
 - Used by the EDI Enveloper.
 - For the first time an EDI document is sent to a partner.
 - If not set then default values will be used.
- **Current Control Numbers**
 - The next control number to be used between partner pairs.



EDI Configuration – EDI Control Numbers (cont.)

Control Number Configuration Details

 **Participant Name** partnera

Interchange

Group

Number

Mask

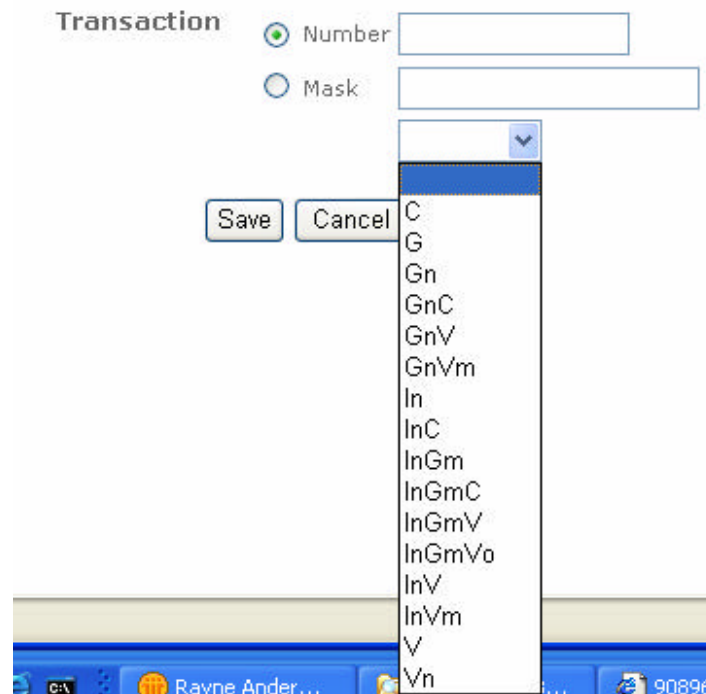
Transaction

Number

Mask

EDI Configuration – EDI Control Numbers (cont.)

From Control Number Configuration Details view





EDI Configuration – EDI Control Numbers (cont.)

Control Number Status

Control Number Status			Welcome, Hub Administrat			
			• Search • Hi			
Page 1 of 1			Total Rows: 2			
Beginning	Back 10 Pages	Back 1 Page	1	Forward 1 Page	Forward 10 Pages	End
From Participant	To Participant	Document Type				
hubmgr	wbcaix11					
ptr	hubmgr					



EDI Configuration – EDI Control Numbers (cont.)

Control Number Details

Control Number Status Details



From Participant hubmgr

To Participant wbcaix11

Document Type

Interchange 000000012

Group 000000012

Transaction 000000012



EDI Configuration – EDI Envelope Profile

- Used by the EDI Enveloper
- Used for grouping together common configuration elements
- Some predefined Envelope Profiles provided with the product which can then be modified or copied
- Configured on the Protocol (i.e. X12V2R1) or Document (i.e. 850)





EDI Configuration – EDI Envelope Profile (cont.)

Example

Envelope Profile | Enveloper | Connection Profiles | Control Number Initialization | Current Control Numbers

Language Locale: en_US | Format Locale: en_US | Time 2

Envelope Profiles » WPG-Defined-X12 Welcome,

	Envelope profile name	WPG-Defined-X12
	Description	Predefined Envelope Profile for use by the Administrator. For those attributes that have default values, the default values are filled in.
	EDI Standard	X12

Envelope Profile Attributes

General
 Interchange
 Group
 Transaction

INTCTLLEN : Interchange Control Number Length 9
 GRPCTLLEN : Group Control Number Length 9
 TRXCTLLEN : Transaction Control Number Length 9
 ENVTYPE : Envelope Type (EDI standard of the profile)
 MAXDOCS : Max Transactions Number
 CTLNUMFLAG : Control Numbers by Transaction Id_N
 (Yes/No)

Legend

Click to edit record



EDI Configuration – EDI Document Attributes

- There are several key attributes to configure for EDI.
- For EDI documents going to a partner
 - Envelope Profile to use (on target partner).
 - FA overdue duration (on target partner).
 - Interchange Business ID Qualifier and Identifier (on both target and source partner)
- For EDI documents coming from a partner
 - EDI Interchange - No required attribute configuration.
 - EDI Transaction (on source partner)
 - EDI Validation map to use. This assumes validation will be done.
 - FA Map to use set at the Protocol. Requires EDI Validation to be done.
 - Can optionally set “Validation level” and “Max validation error level”





EDI Configuration – EDI Document Attributes (cont.)

- There are optional attributes such as:
 - Delimiters
 - Group information
 - Connection Profile (discussed earlier).
- Some can be set only on the Protocol and others at either the Protocol or Document.



EDI Components – Enveloper

Purpose

- For packaging transactions into an Interchange envelope.
- Will use various break point criteria for which Transactions go into an Interchange, such as:
 - Partner pairs
 - Envelope Profile
 - Connection qualifier
 - Batching

Configuration

- Batch mode – whether or not to honor batching. Applies to EDI to EDI, XML Splitting and ROD Splitting.
- Locking based on Partner pairs
- A scheduled transport, either interval or calendar.
- Will use configuration information from Control numbers, Envelope Profile, and Document attributes.





EDI Components – Enveloper (cont)

Enveloper



Lock & Queue

Maximum Lock Time (Seconds): 240

Maximum Queue Age (Seconds): 740

Scheduling

Use Batch Mode

Interval Based Scheduling :

Calendar Based Scheduling :

Interval : 60 seconds





EDI Components – Receiver Splitter handlers

- There are XML, ROD and EDI pre-process handlers for the different Receiver Target transports.
- Used when multiple documents come in a single file, for example from a VAN, or for ROD documents.
- XML Splitter Handler
 - Used for splitting a file into the individual XML documents.
 - Can set batch documents to true which means if these documents get transformed into EDI Transactions, then try to keep all the transactions in the same EDI Interchange document.
- ROD Splitter Handler
 - Used for splitting a file into the individual ROD documents. All documents must be the same type.
 - Configures the document type, metadictionary and metadocument values that apply.
 - Can set batch documents to true which means if these documents get transformed into EDI Transactions, then try to keep all the transactions in the same EDI Interchange document.
- EDI Splitter Handler
 - Used for splitting a file into individual EDI Interchanges.
 - Can be used to set the encoding of the EDI Interchanges. Encoding applies to all Interchanges.
 - EDI Interchanges implicitly have the batch documents set to true for the EDI Transactions within the Interchange, but this does not apply across multiple Interchanges.





EDI Components – FTP Scripting

Purpose

- For general FTP document transfer or VAN connectivity.
- For receiving or sending documents.

Configuration

- A script driven transport supporting a sub-set of standard FTP commands.
- There are two special commands:
 - getdel – used for receiving a single file and then deleting the file.
 - mgetdel – used for receiving multiple files and then deleting them.
- Script file can use substitution parameters.
- A scheduled transport, either interval or calendar.
- Locking – based on userid and IP address.





EDI Components – FTP Scripting (cont)

```
# My sample receiver script
open %BCGSERVERIP% %BCGUSERID% %BCGPASSWORD%
cd %BCGOPTION1%
mget *
quit
```



EDI Components – FTP Scripting (cont)

Target Name MyFTPScriptingReceiver
Status Enabled
Description
Transport FTP Scripting

Target Configuration

Gateway Type: Production
Server IP: localhost { Script parameter BCGSERVERIP }
User Id: xxx { Script parameter BCGUSERID }
Password: ***** { Script parameter BCGPASSWORD }
FTPS Mode: Yes No

Script File(maximum 2kb):

```
# My sample receiver script
open %BCGSERVERIP% %BCGUSERID% %
BCGPASSWORD%
cd %BCGOPTION1%
mget *
quit
```

Connection Timeout: 120.0 seconds
Lock User: Yes No

Global FTP Scripting Attributes

Lock Retry Interval (Seconds): 260
Lock Retry Count: 3
Maximum Lock Time (Seconds): 240
Maximum Queue Age (Seconds): 740

User defined attributes

Option 1: mydirectory { Script parameter BCGOPTION1 }





EDI Components – DIS Client

This is basically the WDI Client but tailored to WPG.

- Used for creating the Validation, Transformation and FA maps for using in the EDI processing.
- Does not have partner management, connectivity configuration, or operational reporting.
- Can export directly to WPG or to an *.eif file.
 - bcgDISImport will import an *.eif file into WPG.
- Contains additional data transformation properties for WPG





EDI Configuration – EDI Maps

- Three types of maps – created via DIS Client and imported into WPG.
- EDI Validation
 - Used by the EDISourceValidationFactory (before transformation) and EDITargetValidationFactory (after transformation) Action steps.
 - Set on the EDI Transaction Document (i.e. 850) for the source partner for Source validation.
 - Set on the EDI Transaction Document (i.e. 850) for the target partner for Target validation
- Functional Acknowledgment – Used by the EDISourceValidationFactory Action step.
 - For creating the FA for reply back to the sending partner.
 - Set on the EDI Transaction Document Protocol (i.e. X12V2R1) for the source partner.
- Transformation
 - Used by the EDITranslatorFactory, XMLTranslatorFactory, or RODTranslatorFactory Action steps.





EDI Configuration – EDI Actions

- There are several Actions for use with EDI Documents.
- Actions are set on the Interaction or Participant Connection.
- For EDI documents going to a partner
 - Pass Through
 - For the Interchange coming from the Enveloper.
 - For the FA coming from the Source EDI Validator.
 - ROD Translate and EDI Validate
 - Can be used for both to a partner or from a partner.
 - XML Translate and EDI Validate
 - Can be used for both to a partner or from a partner.
- For EDI documents coming from a partner
 - EDI De-envelope
 - For the EDI Interchange from the partner.
 - EDI Validate and EDI Translate
 - For the EDI Transactions that where de-enveloped from the Interchange.





Summary

- The basic document flows and how they interrelate:
 - ROD / XML to EDI Transaction.
 - EDI Interchanges
 - Functional Acknowledgments
 - Batching
- Functional Acknowledgment reporting and Document viewing.
- Configuration
 - For different packagings and connections using Connection Profile.
 - Enveloper
 - Envelope Profile
 - EDI Control Numbers
 - Maps
 - Actions
- Major components and their purpose:
 - FTP Scripting
 - Receiver Splitter Handlers
 - Enveloper
 - DIS Client





Back up slides



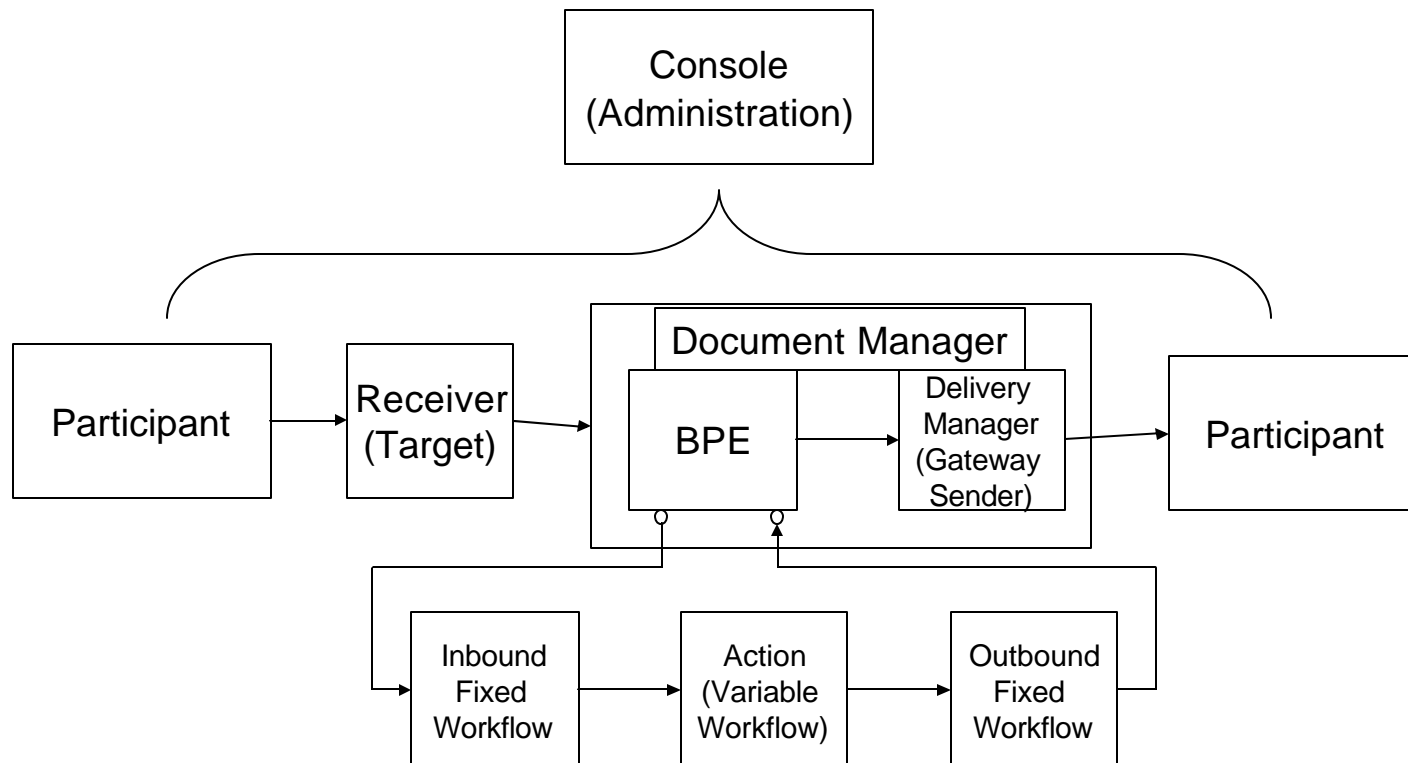


Major components and configuration areas

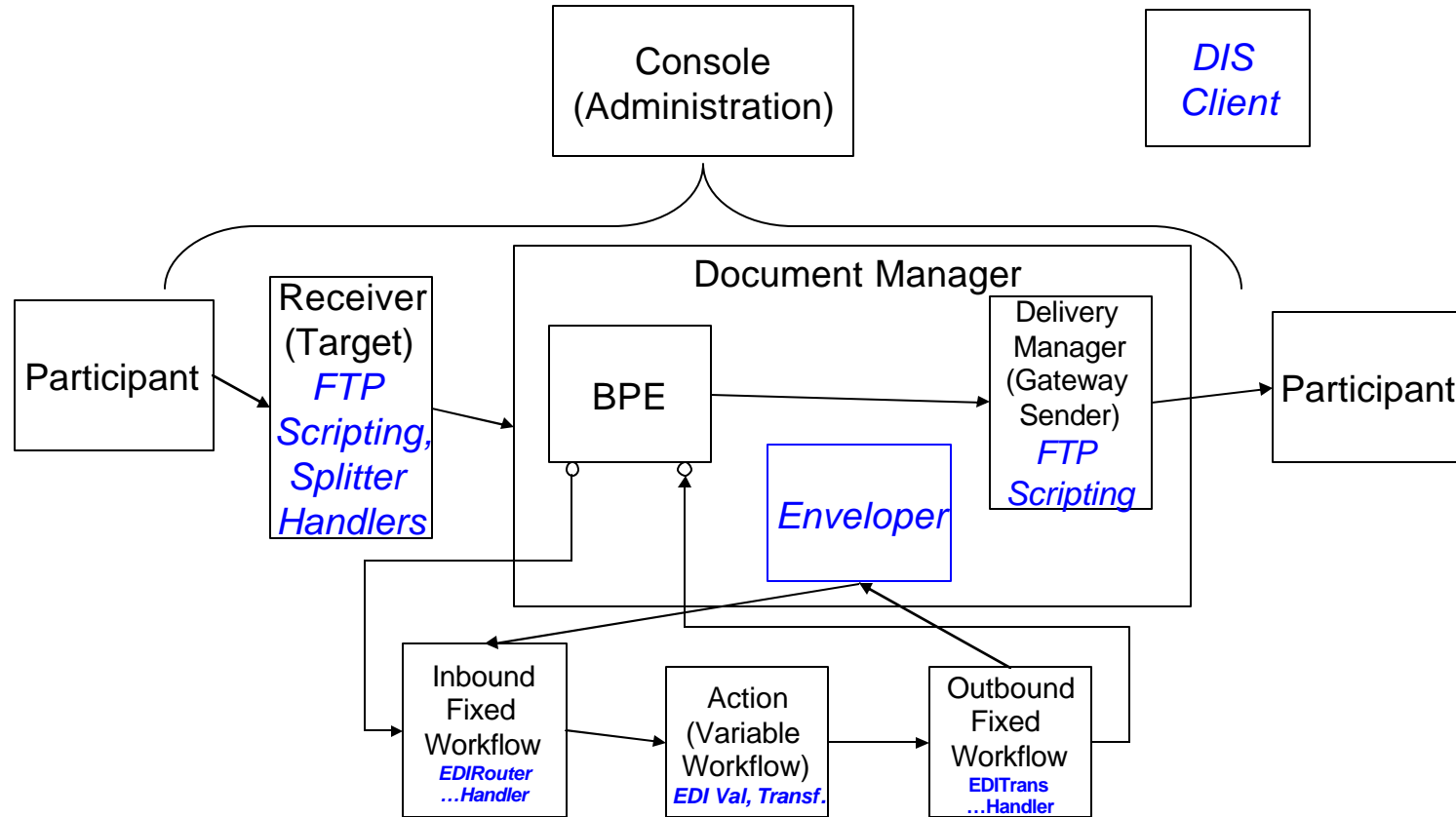
- Components
 - FTP Scripting
 - Receiver Splitter Handlers
 - Enveloper
 - Workflow steps / handlers
 - DIS Client
- Configuration areas
 - EDI Actions
 - Envelope Profile
 - Control numbers
 - Maps
 - Participant Connections



Components – High level

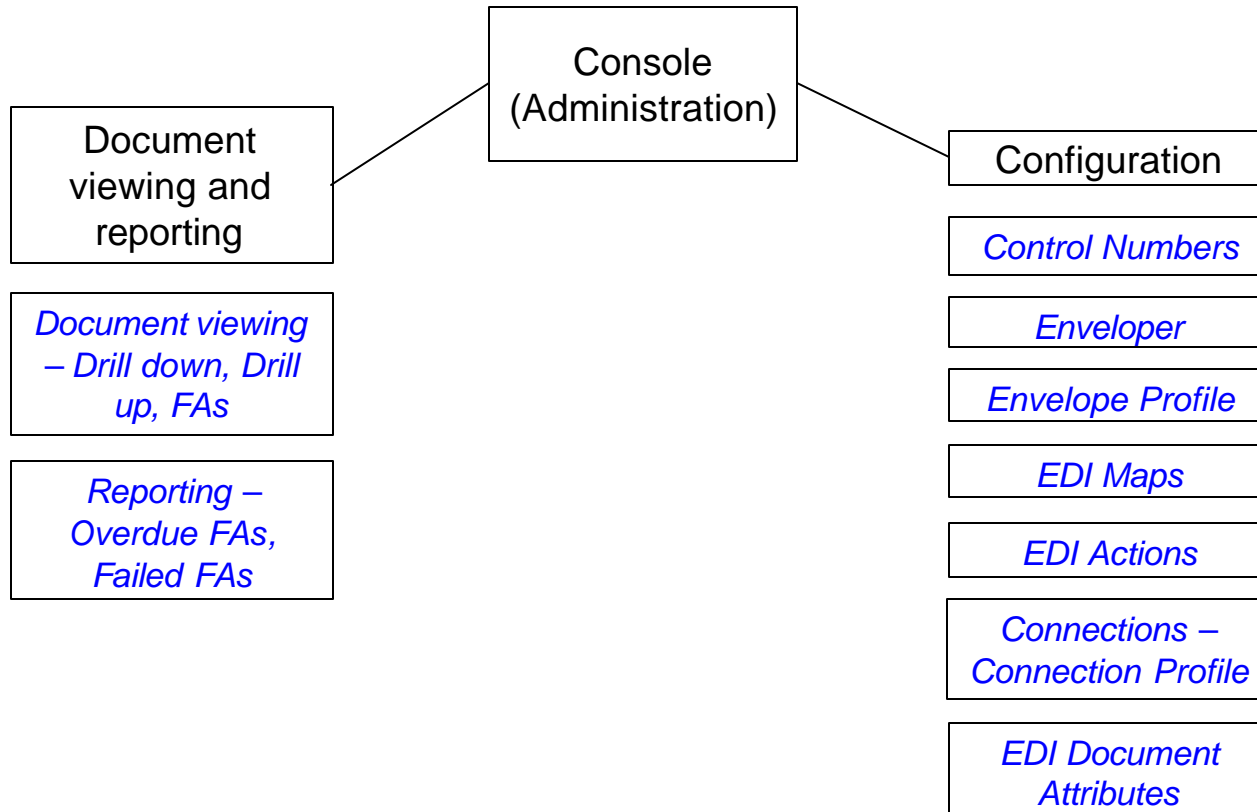


Components – EDI Additions





Configuration and viewing – EDI additions





EDI Components – Workflow handlers

Fixed inbound workflow

- EDIRouterBizProcessHandler (modified from previous releases)
 - For determining EDI Interchange type and business ids.
 - For an Functional Acknowledgement Transaction will update reconciliation tables (used in document viewing).

Action steps

- EDIDenvFactory – For de-enveloping an EDI Interchange (extracting the transactions).
- EDISourceValidationFactory – Validates transactions in an EDI Interchange and generates the Functional Acknowledgement.
- EDITranslatorFactory – Transforms an EDI Transaction.
- XMLTranslatorFactory - Transforms an XML document.
- RODTranslatorFactory - Transforms an ROD document.
- EDITargetValidationFactory – Validates an EDI Transaction created from a transformation.

Fixed outbound workflow

- EDITransactionHandler – Sends EDI Transactions to the Enveloper.

