

*IBM Network Station™ Family of Thin Clients*  
*Access for today, flexibility for tomorrow*



# Network Station Manager V2R1 VTxxx Client Overview

**August 29, 1999**



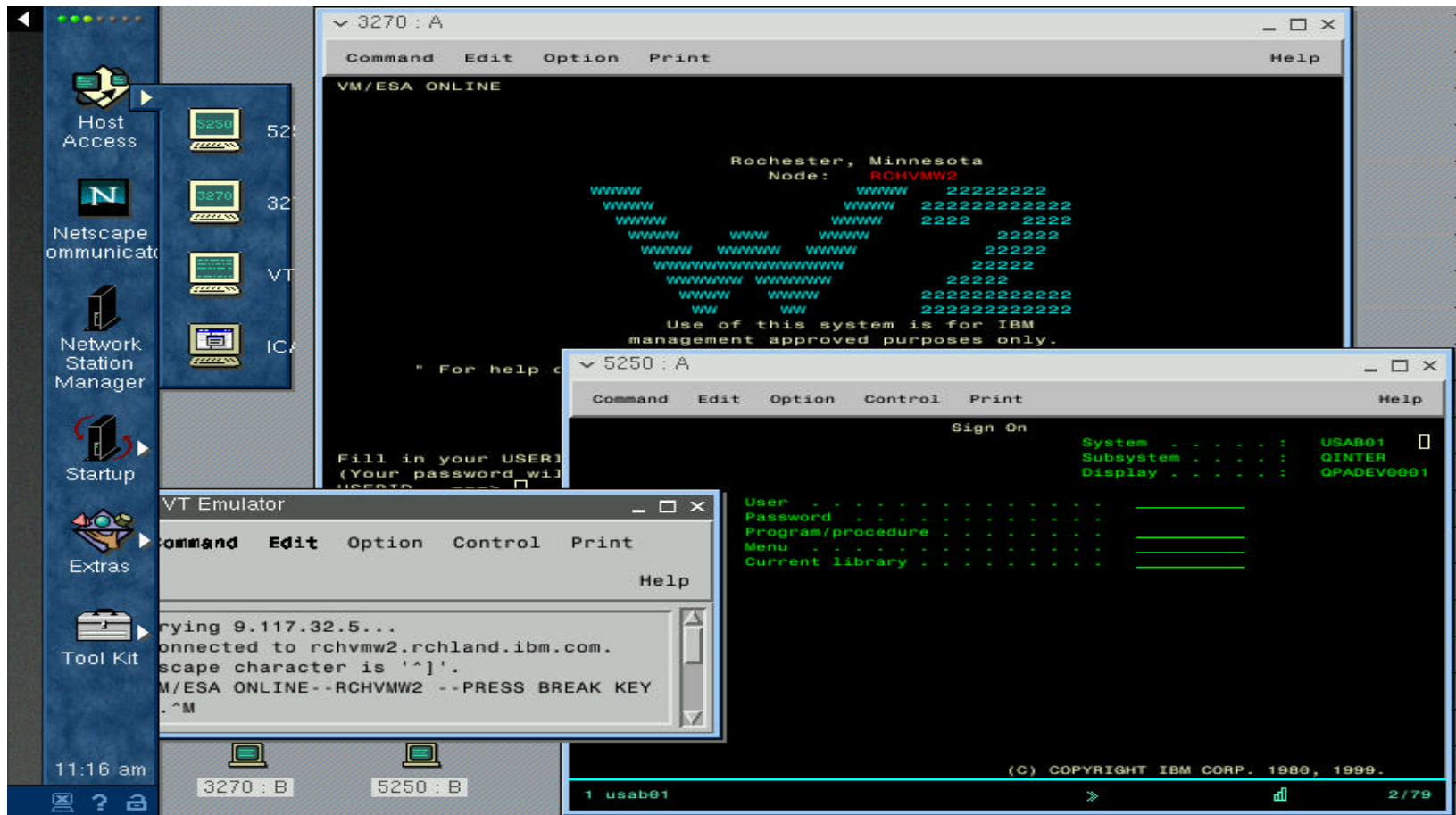


# V2R1 Terminal Emulation Enhancements

## VTxxx

- VTxxx convergence toward 5250/3270 standard interfaces

... and more





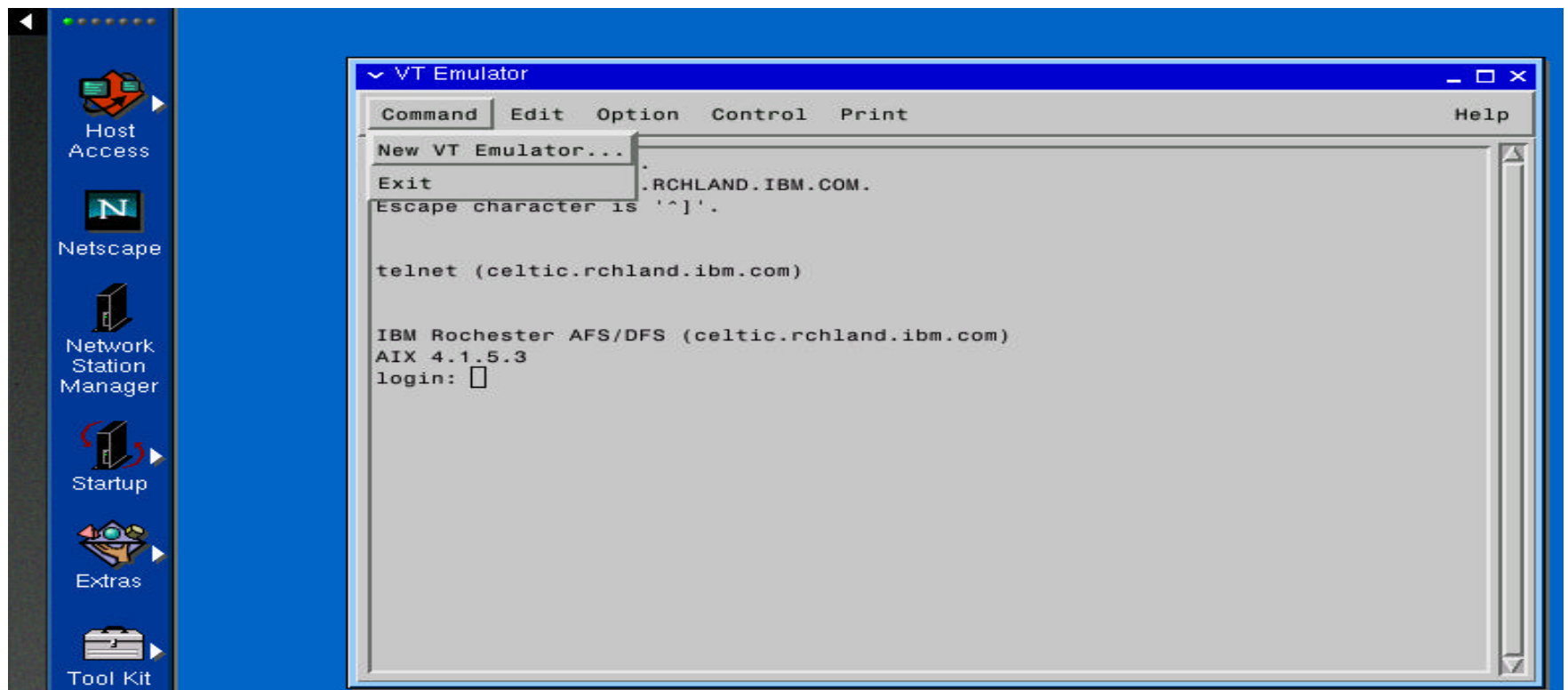
## What's New with the VTxxx V2R1 Client

- **Everything you liked about V1R3 functions migrate to V2R1**
- **V2R1 provides additional functions you asked for**
  - ▶ **Convergence with 5250/3270 clients**
  - ▶ **Common Help viewer**
  - ▶ **Common Menu structure**
  - ▶ **VTxxx keyboard remapping Common User Interface**
- **New source code base**
  - ▶ **Derived from CDE dtterm IBM code**
  - ▶ **Now, IBM controls and manages the source!**
    - **Quicker response to field situations**
  - ▶ **Slightly different function set, user interface, preferences**



## V2R1 VTxxx Client Preview

- **Look and feel improvements - common to 3270 and 5250**
  - ▶ **Menu Bar consistency**
  - ▶ **Integrated Help Facility**
    - Includes key descriptions, functions
  - ▶ **Windows-like desktop operation and appearance**





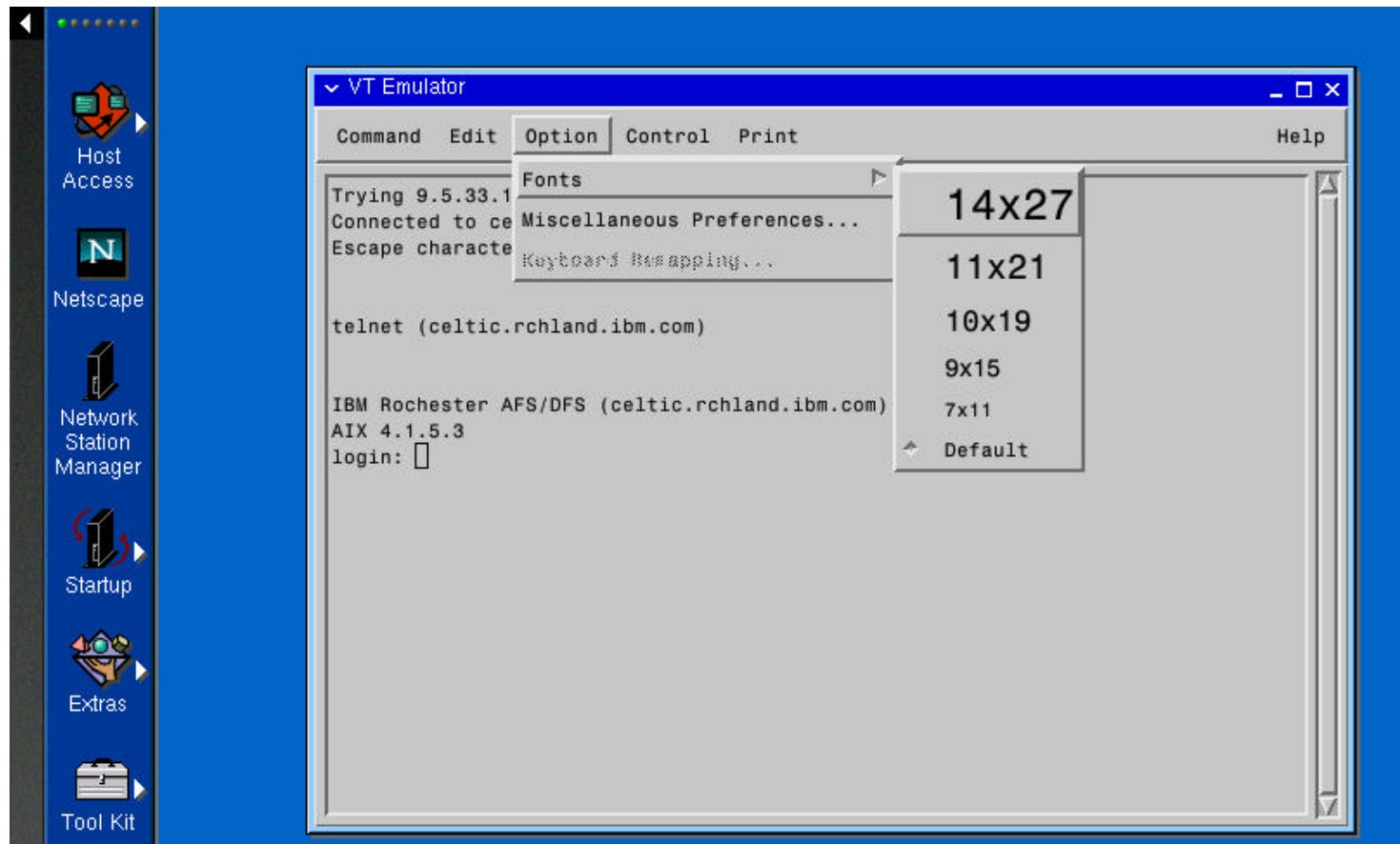
## V2R1 VTxxx NPT Client Unique Functions

- **VTxxx NPT client - New IBM code base**
  - ▶ **Richer function set**
  - ▶ **Consistent and easier management from NSM**
  - ▶ **Same Archetype models supported:**
    - VT100, VT102, VT200, VT220, VT300, VT320, Xterm, ANSII
  - ▶ **Printer functions now similar to other NPT clients**
    - Plus printer passthru (escape code) support as per V1R3
  
- **VTxxx - convergence toward 5250/3270 standard User Interfaces**
  - ▶ **Graphical Keyboard remapper**
    - PC style default
    - VTxxx archetype keyboard templates
  - ▶ **Online Help Text**
  - ▶ **Miscellaneous preferences**
  - ▶ **NSM config options controls**
  - ▶ **Standard NWS printer support for ASCII, PS, PCL datastreams**
  - ▶ **Latin 1 code pages -same coverage as V1R3 + Euro symbol**



## Option pulldown, with manual font select

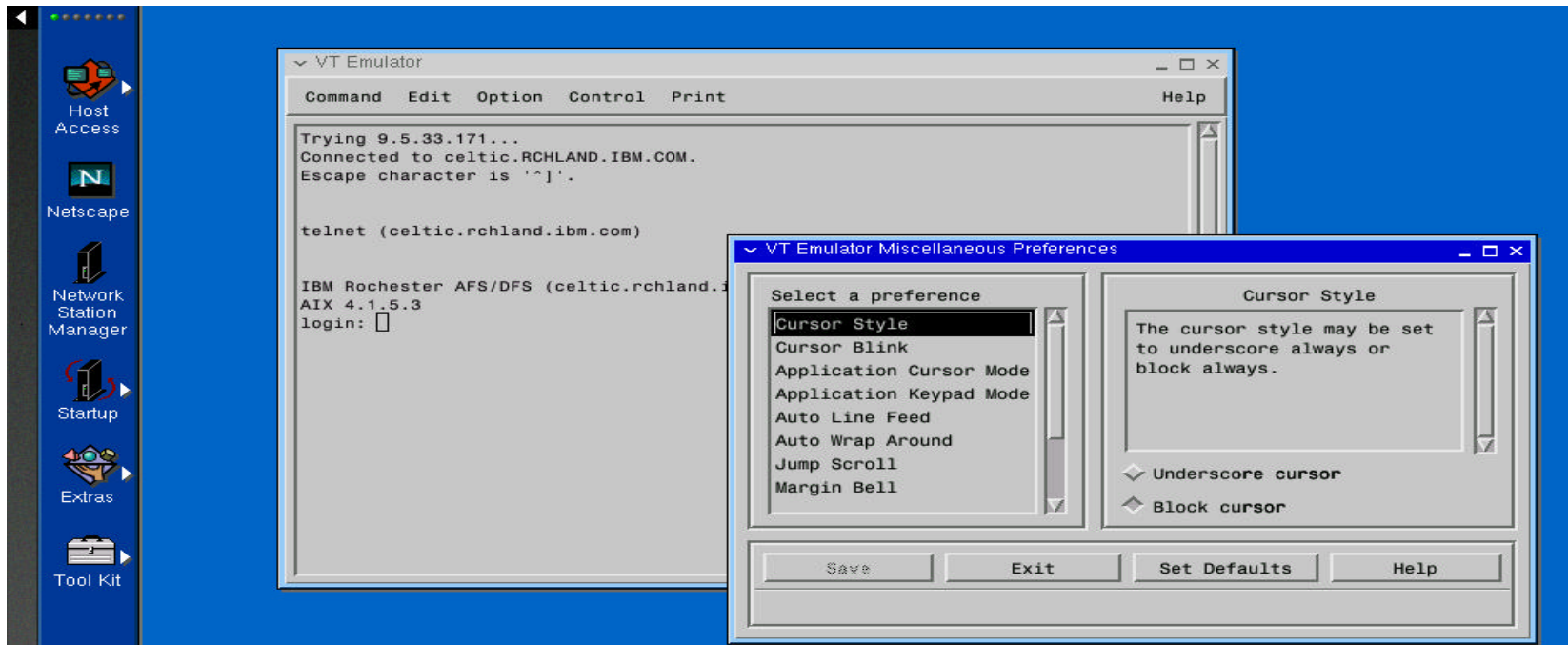
- Similar to V1R3 5250 font select management, sizing controls
  - ▶ Does NOT autoscale with window size change





## Miscellaneous Preferences

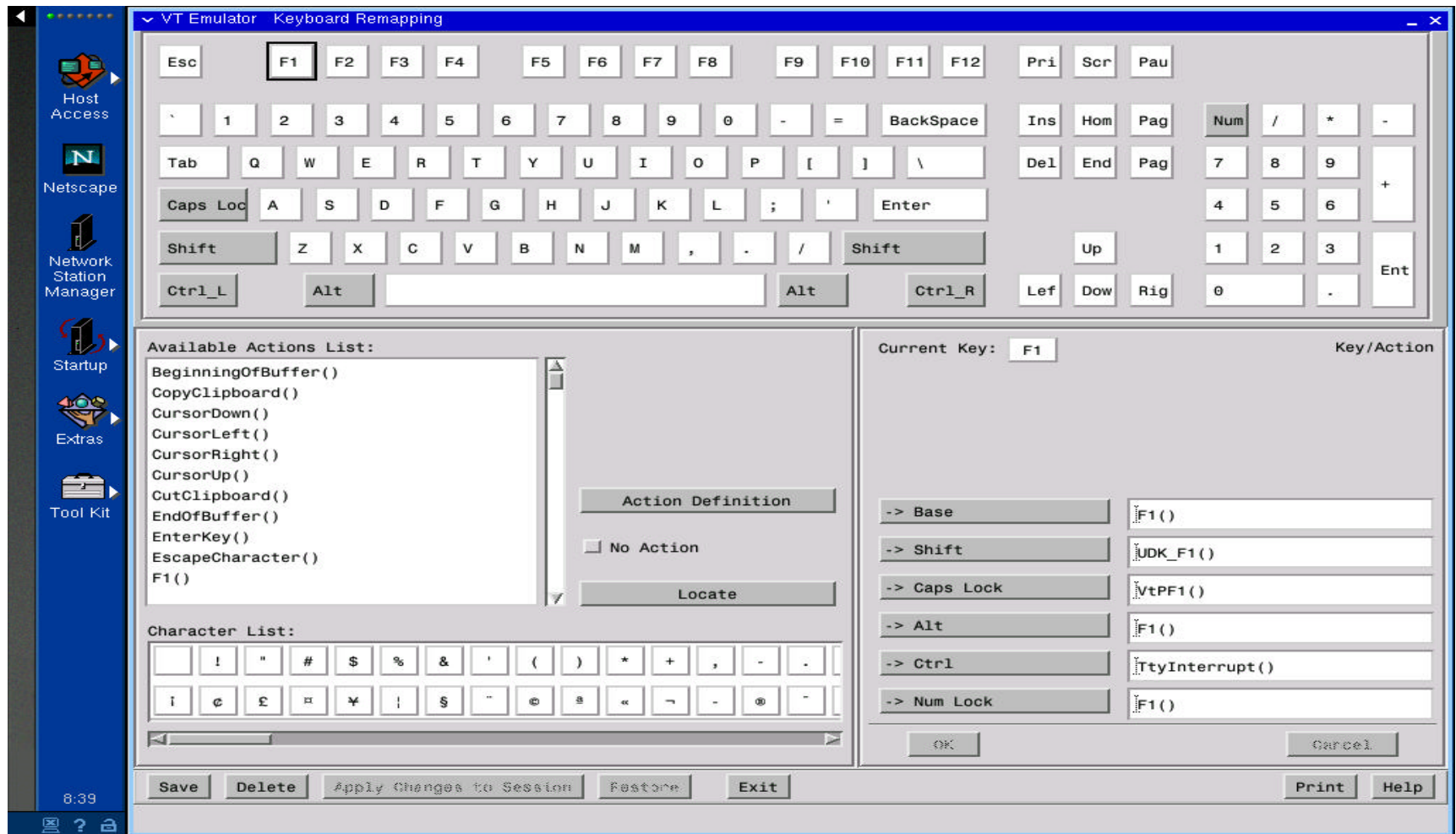
- Cursor Style (block/underscore)
- Cursor Blink
- Application Cursor Mode
- Application Keypad Mode
- Auto Line Feed
- Auto Wrap Around
- Jump Scroll
- Margin Bell/Margin Bell Column
- Reverse Wrap Around
- Visible Status Line
- Visual Bell





# VTxxx Keyboard remapper-Default

- Graphical Keyboard Mapper
  - ▶ PC Style Default
  - ▶ Multiple actions macro and string capability



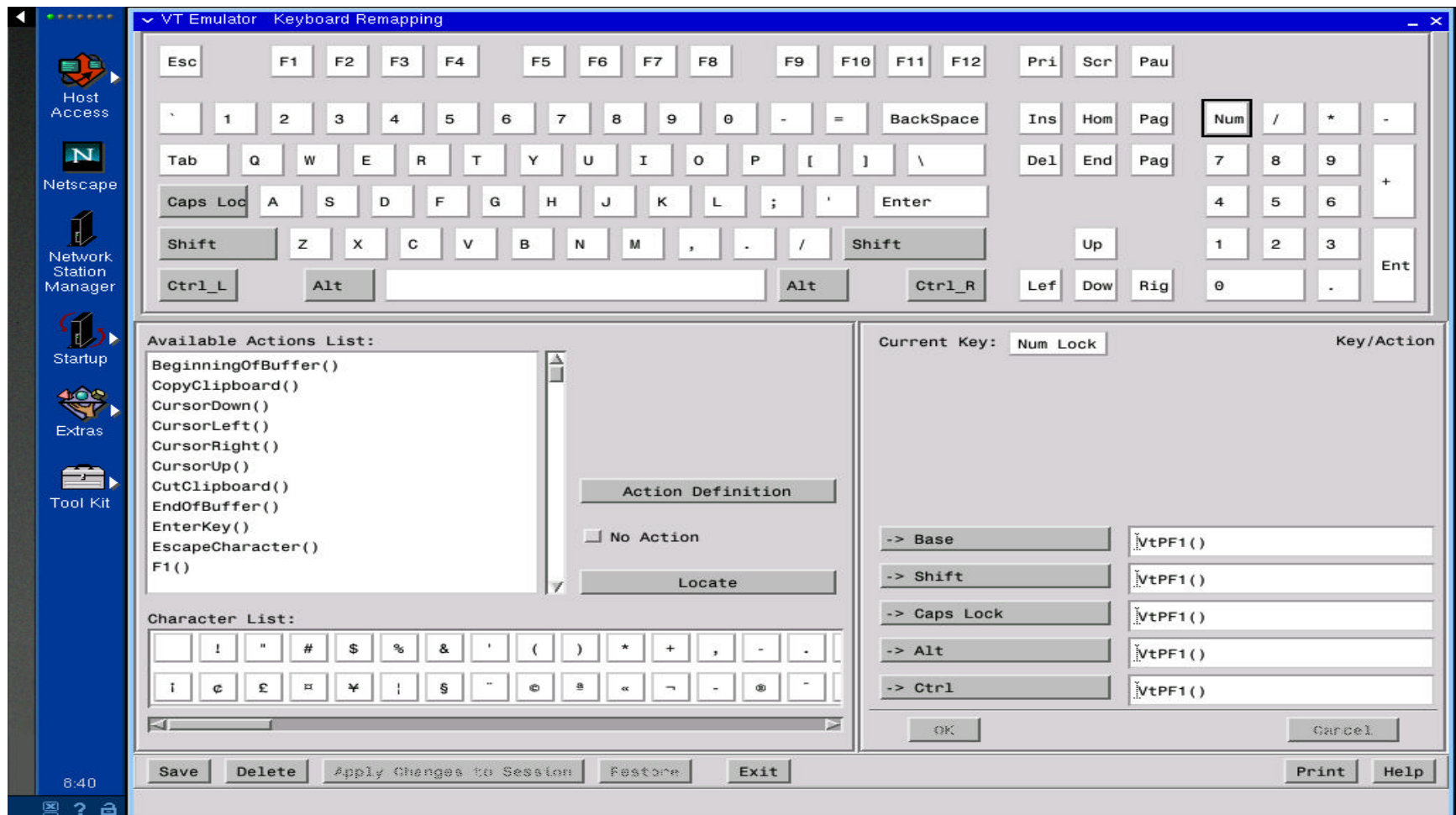




## Graphical remapper - Native VT220 layout

4 special PF keys over Num Pad area

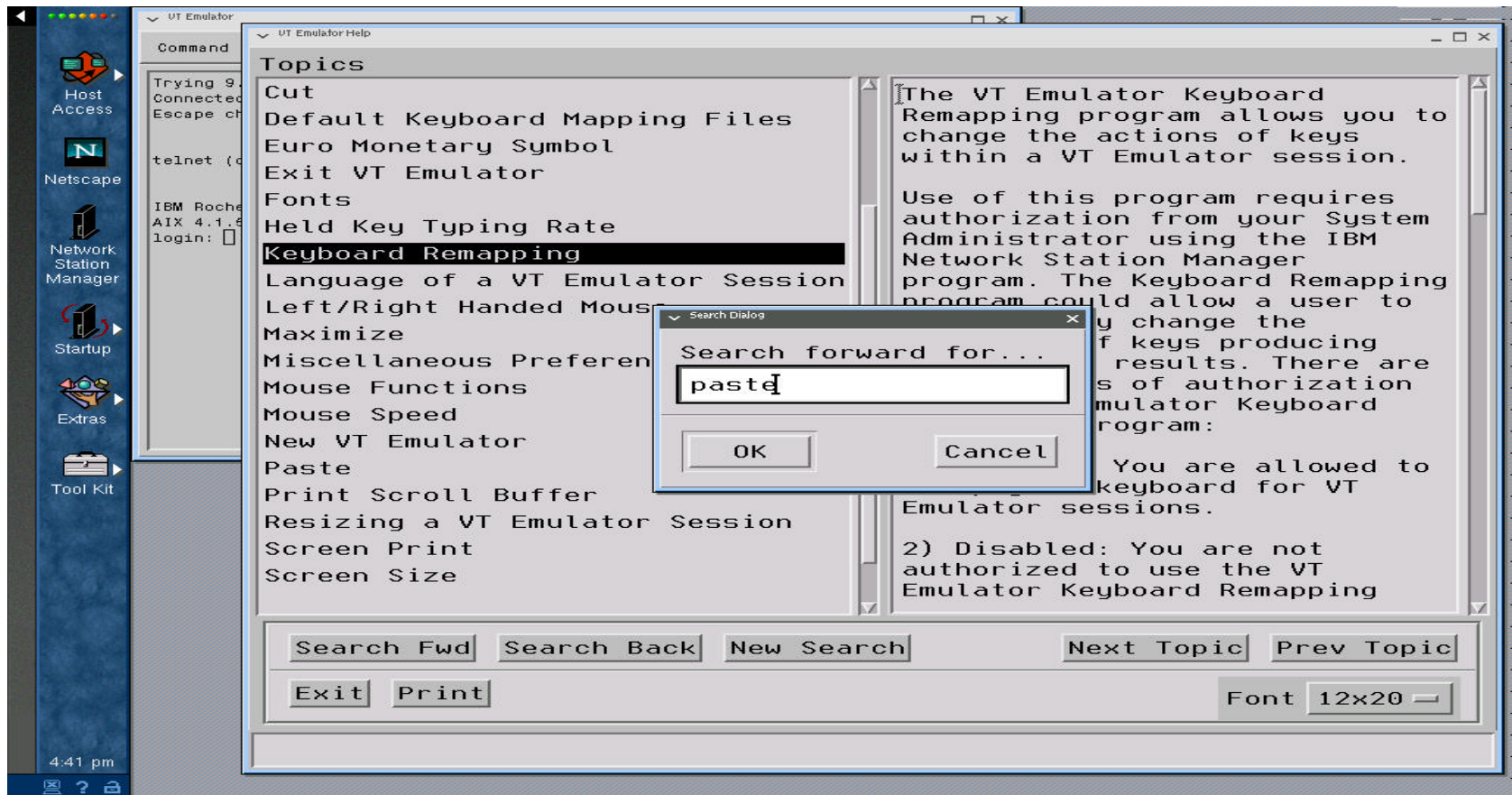
Use -numLock option on command line << Note capitalization!





## New Help Viewer function

- Over 50 panels of details
- Additional help found in keyboard remapper help area
- More help found in NSM help text





## VTxxx new client differences

- **Derived from IBM's DTTTERM code**
  - ▶ **Not ported from former NCDI VTxxx client V1R3 code**
  - ▶ **Different preferences, resource names, values**
  
- **List of known differences from V1R3**
  - ▶ **Diagnostic interface to OS is Xterm, NOT NSterm**
    - **Loopback, localhost options disabled in NSterm**
  - ▶ **No blink attribute, cursor appearance differences**
  - ▶ **No peer-to-peer network printer function as before**
    - **Standard Network Printer support**
    - **NWS local printers can be configured as Network Printers**

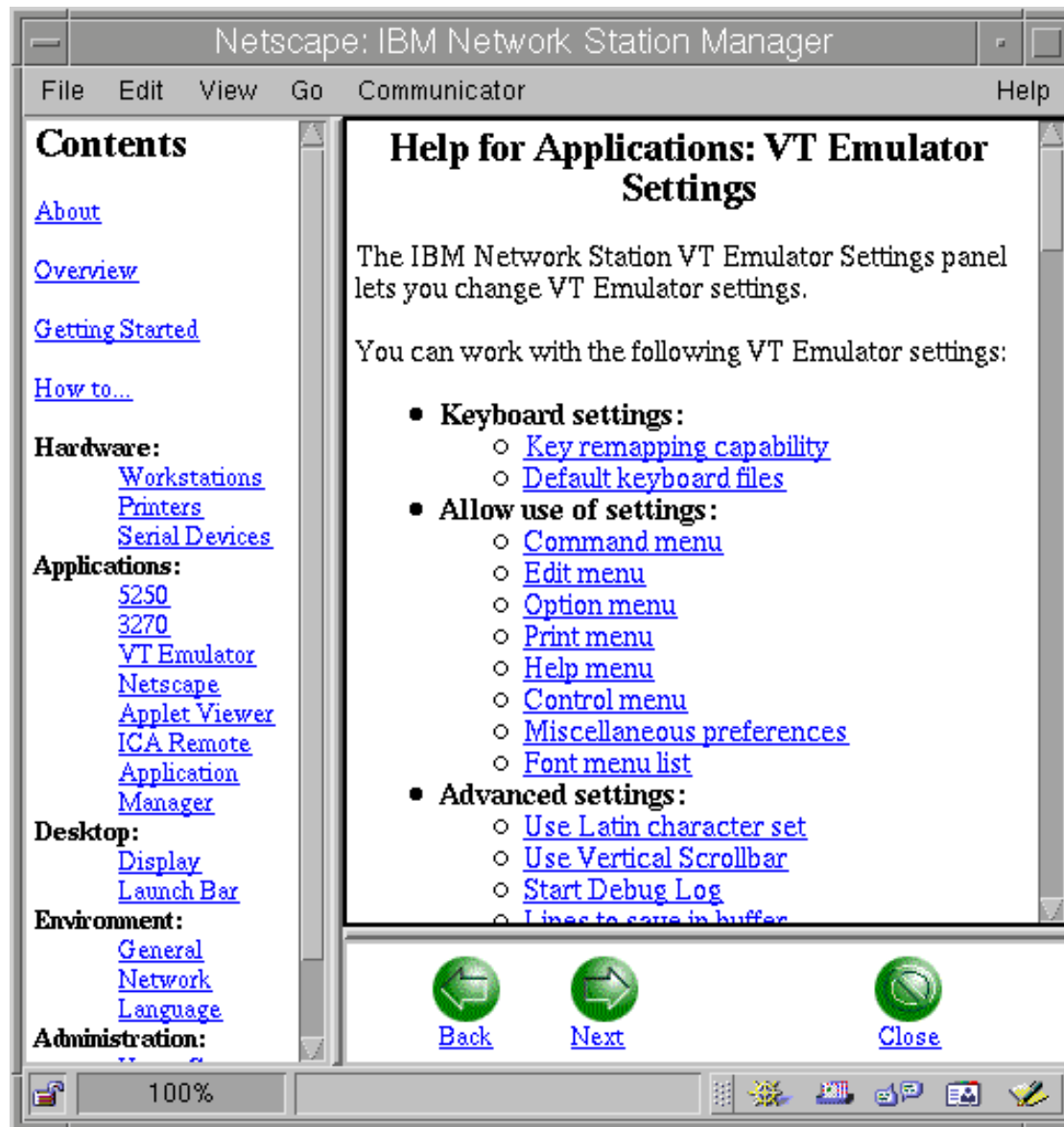


## Unfulfilled significant requirements

- **Color mapping**
  - ▶ Use command line `-bg color` and `-fg color` switches
  - ▶ Refer to help text, "Color Preferences"
- **No VT340, VT420, or IBM 3151 emulation modes**
- **No SCO ANSII datastream support**
- **others??**

# VTxxx NSM management options

*Also, see "Additional Parameters" Help text in VTxxx client*





## V2R1 Sales Considerations (All Clients)

- **Minimum Footprint increased**
  - ▶ **32 MB minimum system memory configuration,**
    - Original 16 MB machines not supported
    - VTxxx client requires 3MB, 0.5 MB add'l sessions
- **up to 4X network traffic boot & application load**
- **NLS coverage reduced**
  - ▶ **Latin 1 locales subset only**
    - English, UK English, French, Belgian Fr, Canadian Fr, Swiss Fr, German, Swiss German, Italian, Spanish, LA Spanish, Swiss Italian, Brazilian Portuguese, Dutch, Belgian Dutch, Danish, Finnish, Norwegian, Portuguese, Swedish
- **VTxxx migration issues with new code base**
- **Comm error recovery**
  - ▶ **No messages if Boot Server connection broken**
- **Unix mouse focus policy dropped (need explicit click on window)**
- **"Lower" window management function dropped**



## V2R1 - Continued VTxxx Client Improvements

- **More windows-like PC affinity**
- **Consistent family image, including VTxxx**
- **Improved management via NSM GUI**
- **Integrated all V1R3 PTFs**
- **Extensive on-line help, with keyboard function definitions**