



Part Number: 46L2854

ThinkPad 240 Quick Reference and Service Information

Your Name:

Company Name:

Model Number:

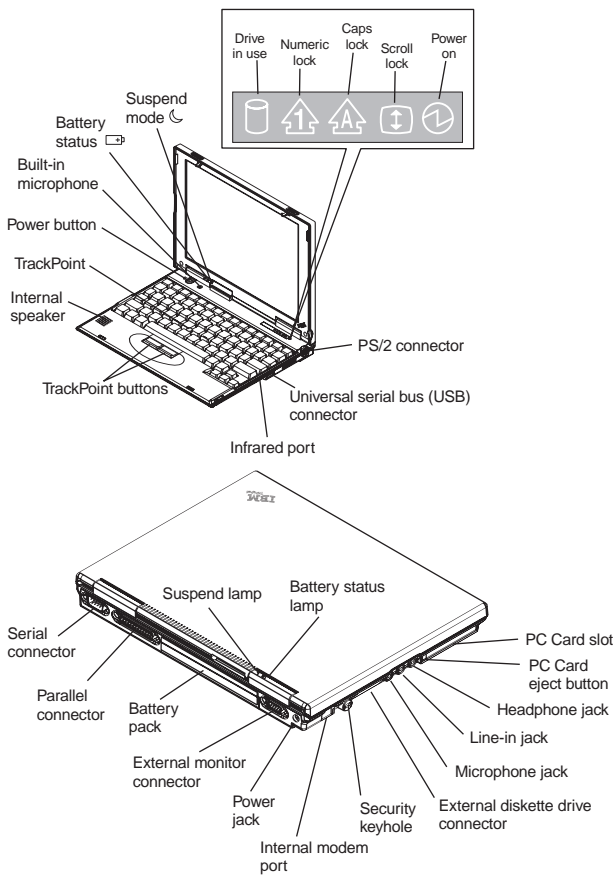
Serial Number:

Company or Reseller Service:

IBM Service Website:

IBM Service Number:

Location



Function Keys

Key Combination	Result
Fn + F3	Enters standby mode.
Fn + F4	Enters suspend mode.
Fn + F5	Decreases the LCD brightness.
Fn + F6	Increases the LCD brightness.
Fn + F7	Changes the display output location.
Fn + F8	Changes the power mode during battery power operation.
Fn + F9	Enters the computer into hibernation mode.
Fn + F10 (PrtSc)	Prints the screen image.
Fn + F11 (ScrLk)	Enables or disables the scroll lock mode.
Fn + F12 (Pause)	Pauses the current operation.
Fn + zero (0) : (SysRq)	Activates the system request function. Note: The SysRq key is used by computer terminals to get the attention of a central computer.
Fn + minus sign (-) : (NumLk)	Enables or disables the numeric keypad.
Fn + equal sign (=) : (Break)	Signals a break.
Fn + ↑ : PgUp	Page Up (moves the cursor up one page).
Fn + ↓ : PgDn	Page Down (moves the cursor down one page).
Fn + ← : (Home)	Home (moves the cursor to the beginning of the document).

Key Combination	Result
Fn + → : (End)	End (moves the cursor to the end of the document).
Fn + Right shift : (Caps Lock)	Toggles the Caps Lock.
Fn + Insert	Decreases the speaker volume.
Fn + Delete	Increases the speaker volume.
Fn + Back-space	Mutes the speaker volume.

Getting Service

Always read the Solving Computer Problems chapter of your User's Reference before calling IBM.

During the warranty period, you can get help and information from the International Warranty Service (IWS) in your country. Before you call, fill out the front of this card. Also have:

- Exact wording of any error messages
- Hardware and software configuration information
- Description of the problem
- Information and serial numbers of any options installed on your system

International Warranty Service

This IBM product is eligible for IWS wherever your machine type is sold by IBM. Your computer must be registered to receive international service. To register, call one of the following IWS offices:

Southeast Asia, Australia, New Zealand, and Hong Kong:	61-2-9354-4171
Canada, Latin America, and the U.S.:	1-800-497-7426
Europe, Middle East, and Africa:	44-1475-893638

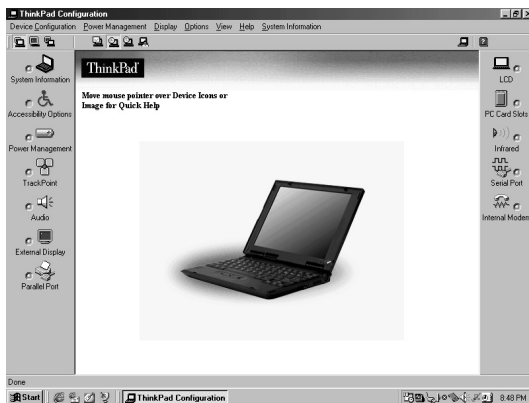
Japan, Korea, China (except Hong Kong), and Taiwan: 81-462-73-7598

Help through a ThinkPad Web Site

- The latest information about ThinkPad computers:
➡ <http://www.ibm.com/thinkpad>
- Technical support information:
➡ <http://www.ibm.com/support>

ThinkPad Configuration Program

You can manipulate your hardware system settings with the ThinkPad Configuration Program. To start the ThinkPad Configuration Program, click on **Start**, move the cursor to **Programs**, **IBM**, then **ThinkPad Configuration**.



For more information, click on the **Help** button



TrackPoint Setting

You can customize such TrackPoint functions as **Press-to Select**, and **Sensitivity**. Click on **Start**, move the cursor to **Settings, Control Panel**, then double-click on the **TrackPoint** icon.

For Further Information

You can find the following information in your ThinkPad user's manuals:

User's Reference	Online User's Guide
<ul style="list-style-type: none">• Getting familiar with your computer• Extending the features of your computer• Protecting your computer• Troubleshooting• Getting service• Features and specifications• Product warranties and notices• Glossary and index	<ul style="list-style-type: none">• Using your computer outside your country• Using audio and modem features• Protecting your computer• Operating with a battery pack• Using a PC Card• Resolving system resource conflicts• Troubleshooting• Installing software• Managing your system• Using PS2 commands
<p>Note: To see the Online User's Guide, click on Start, move the cursor to Programs, ThinkPad, then ThinkPad Online User's Guide.</p>	